



# EUROPORTS

DELIVERING MARITIME SUPPLY-CHAIN SOLUTIONS

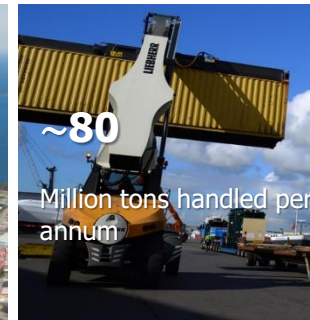
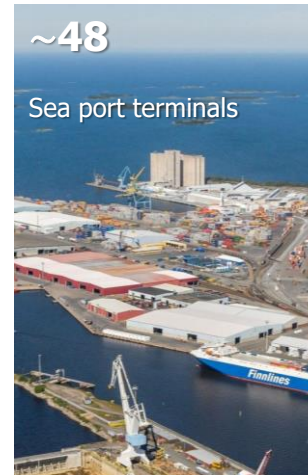
23 Mars 2020

# About us

Euroports is one of the largest port infrastructure operators with a wide footprint of approximately 40 Sea port terminals and more than 10 Inland terminals and logistic platforms globally, strategically located on key trade routes in Europe and China. Each year we handle approximately 65 million tons of essential commodities in the form of bulk, breakbulk, containers and liquid.

Euroports' vision and strategy is to become the leading global bulk and breakbulk port operator, further embedded within its long-term customers' activities across a diversified portfolio of essential commodities.

With our team of 3,000 dedicated professionals, we develop, operate and manage global maritime supply-chain solutions for international customers in key industry sectors.



# Our business

Euroports industry experts assist customers to design, operate, and manage maritime supply chain solutions that deliver sustainable competitive advantages. Euroports' core business is centred around port operations, complemented by value added services and freight forwarding.



## Port operations

- Total quay length: ~50 km
- Total warehouse surface: ~1,5 million sqm
- Bulk, breakbulk, liquids, project cargo, containers, wind mills components
- ISPS certified terminals



## Value-Added Services

- Sieving & Blending
- Bagging & Packaging
- Sampling & Quality control
- Container Services
- Washing & repair
- Agency Services
- Customs Clearance



## Freight Forwarding

- Sea Freight
- Coastal/Inland shipping
- Air Freight
- Road Transport
- Rail Transport
- Barging solutions



# Health and Safety

Our employees deserve to work in a safe and healthy environment. We are therefore committed to the workplace health and safety regulations expressed in our health and safety policies.

- Our health and safety policies, active in all locations throughout the world, include a ban on alcohol and drugs in the workplace. We prohibit any kind of violence and assault at the workplace, including threatening and intimidating behaviour.
- Focussing on achieving zero harm, Euroports places safety and compliance as its highest priority.
- This objective drives increasing standardization of processes across the business, resulting in greater operational efficiency
- QHSE program results
  - 70% reduction in lost days achieved since 2013
  - Incident frequency rate reduced by 80 %



# Sustainability - ESG

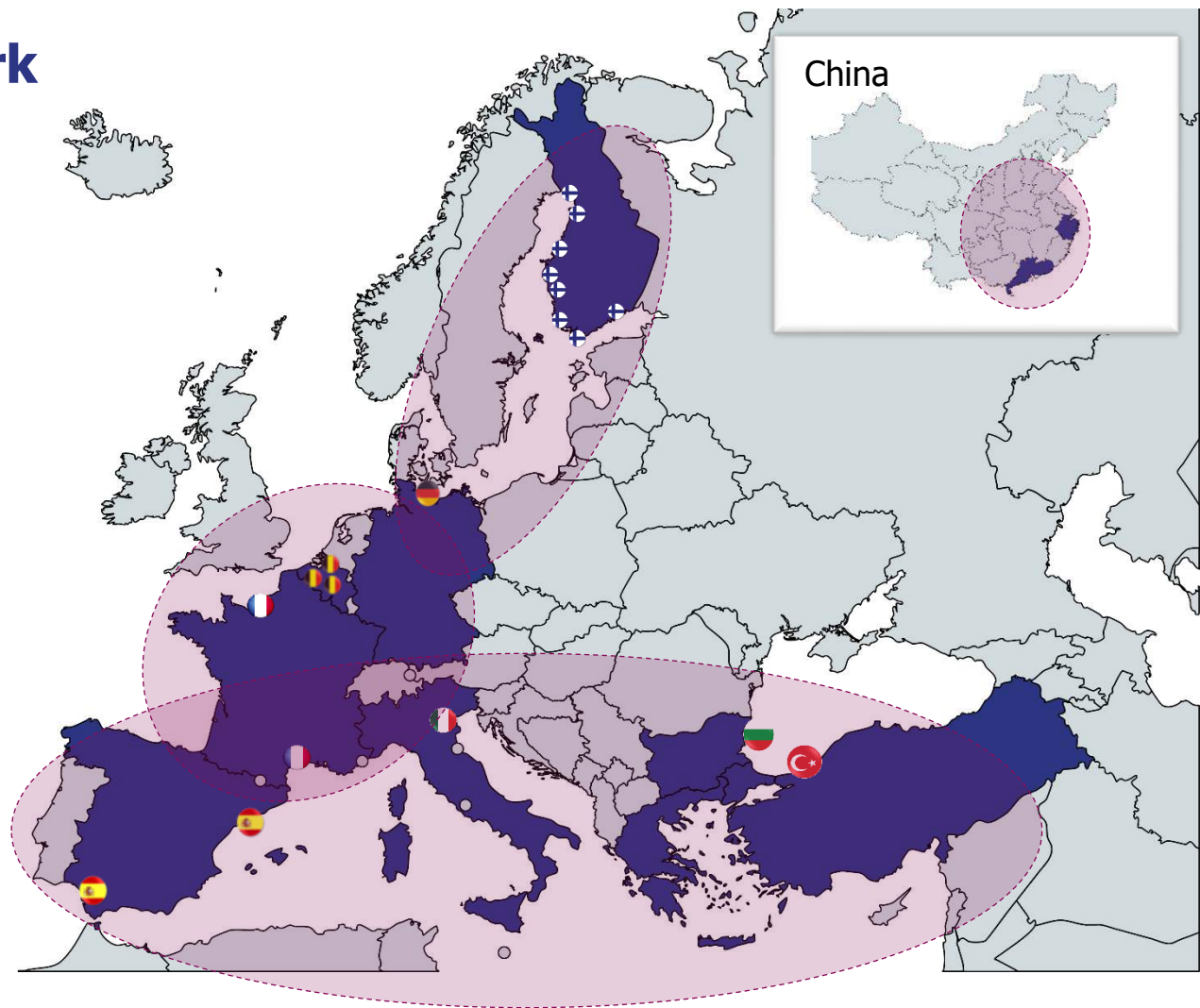
Euroports Group is committed to contributing to a more sustainable port and logistic business.

- We aim to see a 40% reduction of our emissions by 2030 compared to the baseline year of 2020.
- We released our first Sustainability Report for 2021, contributing to the formalization of Euroports' ESG strategy for the Group and transparency. The report captures our commitment to creating positive impacts in society and it provides an overview of our social and environmental initiatives as well as our efforts to develop a healthy and safe workplace.
- Our EcoVadis sustainability recognition level is bronze.
- We joined the United Nations Global Compact as a signatory company in 2021. In 2022 we joined the early adopter program to digitally submit our first annual communication on progress.

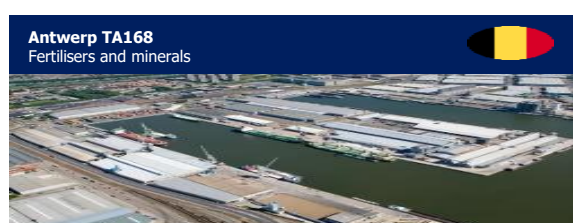
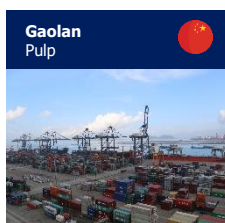
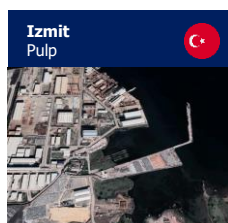
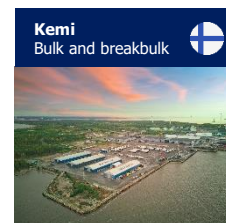
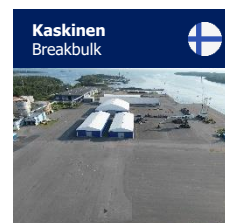
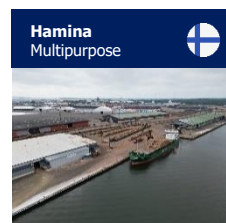
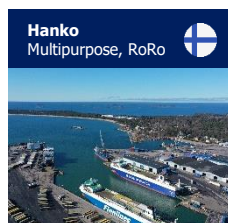
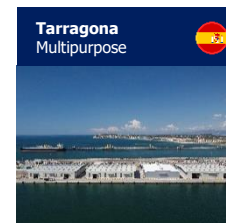
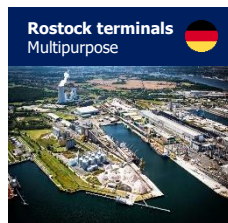
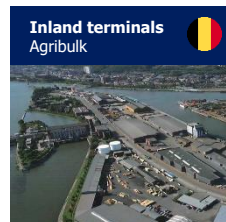


# International network

Ports are located in clusters along key trade routes, providing opportunities to bundle cargo flows and achieve improved connectivity when transporting key commodities from production source to destination.



# International network



# EUROPORTS FRANCE - Port-La Nouvelle

Euroports France:

- Est actionnaire de la SEMOP Port-La-Nouvelle,
- Est « sous-concessionnaire » des terminaux EMR, Bulk & Breakbulk et liquide,
- Est partie prenante du développement commercial du port de Port-La-Nouvelle,
- Assure une mission d'AMO au profit de la SEMOP



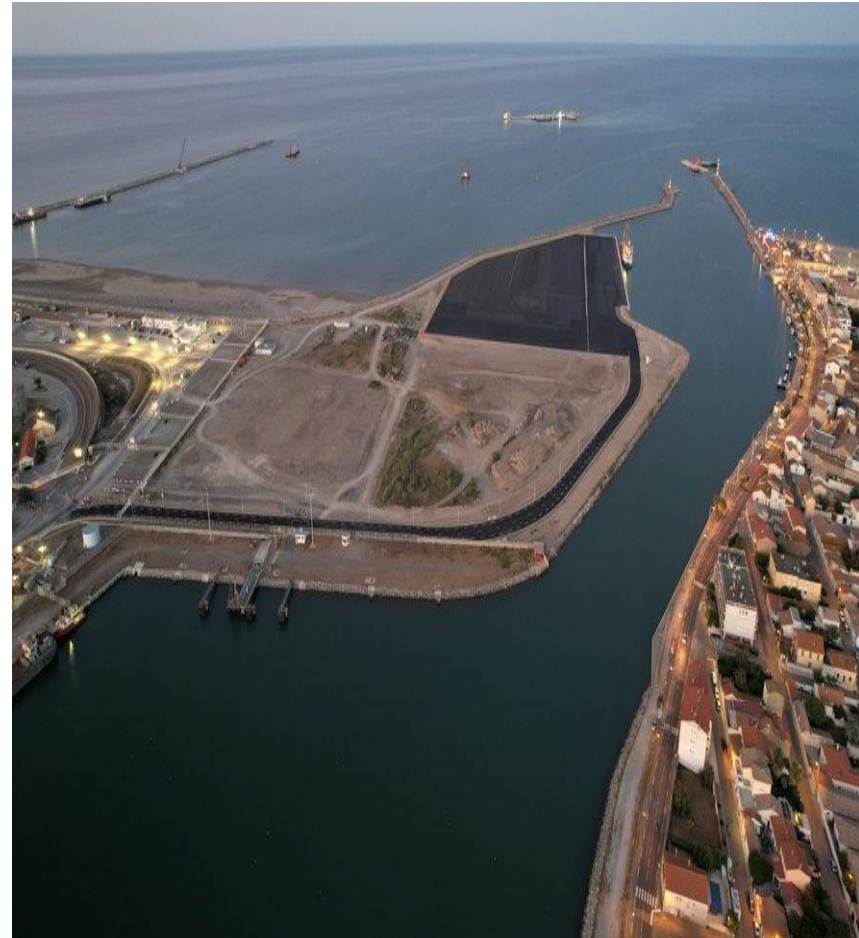
# Wind Mills Terminal-quai colis lourds

## 1. INFRASTRUCTURE PORTUAIRE

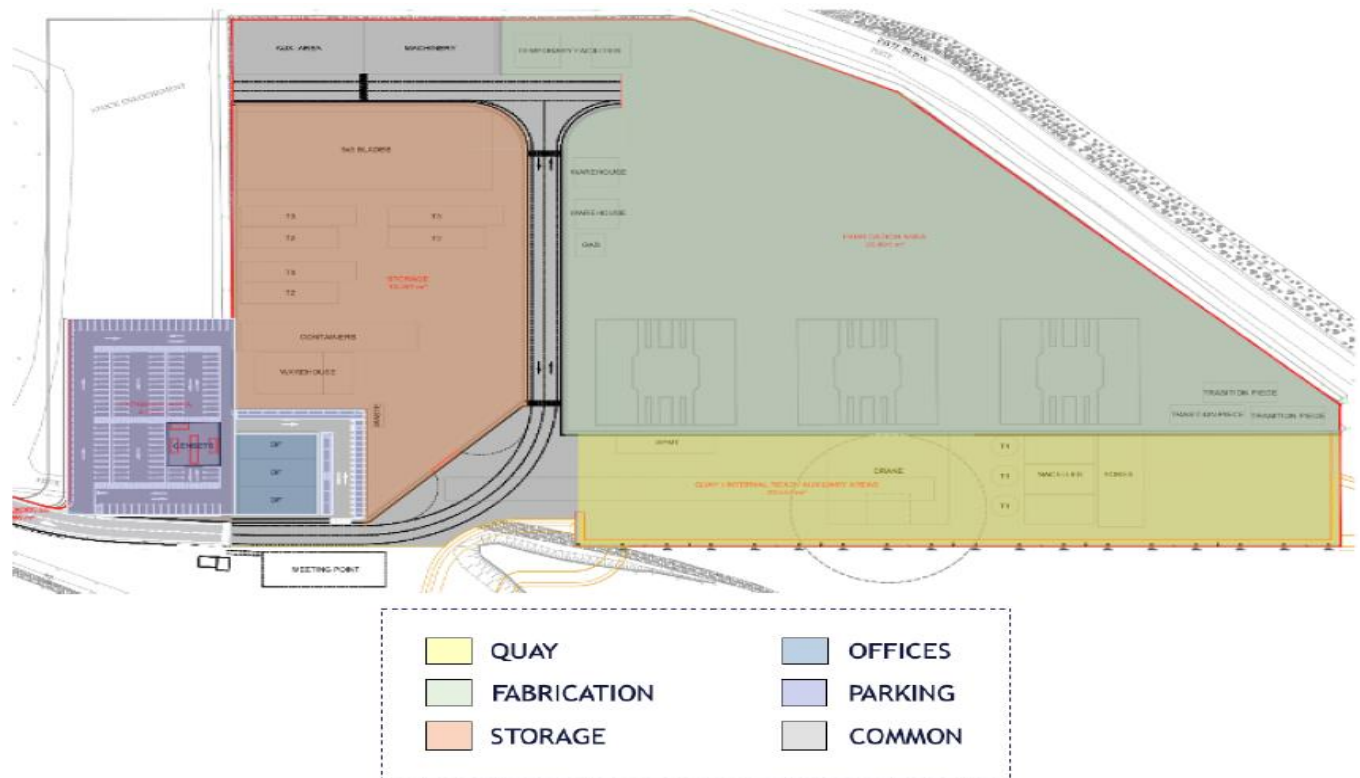
- 7,5 hectares
- Quai: 250 m
- Tirant d'eau: - 11 m on 200 meters

### Extension (2026):

- Entre 35 hectares et 42 hectares
- + & quai 300 m/tirant d'eau: - 15,5 m



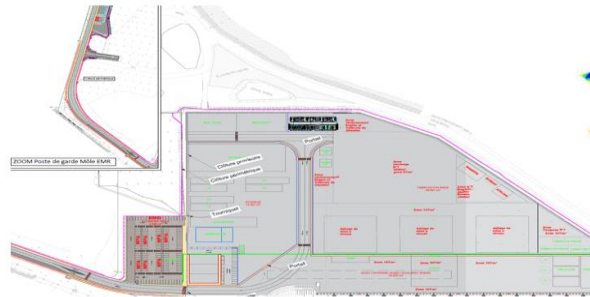
## GENERAL LAY-OUT



# 1ère Phase: Travaux d'adéquation du Terminal

Travaux d'adéquation du terminal:

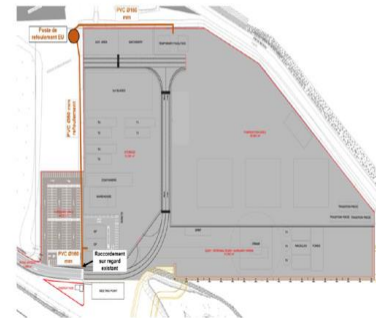
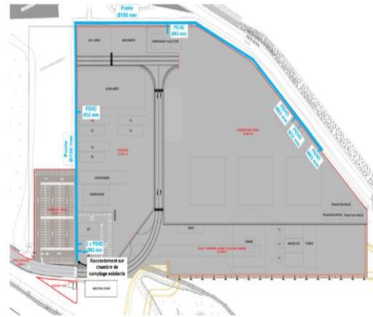
- Réseau électrique,
- Réseaux et VRD
- ISPS



POTABLE & WASTE WATER



ELECTRIC SUPPLY



# Wind Mills Terminal

## Services provided by Euroports France:

- Mise en adéquation du site (énergie, réseaux etc),
- “base vie”: bureaux, entrepôts, car parking, commodities & utilities,
- Management des interfaces et de la co-activité
- Management des interfaces avec las SEMOP PLN et la Région Occitanie
- Manutention, déchargement et roulage des composants
- Assemblage turbine (via Mammoet)
- Shipping Agency
- T&I Port logistic support
- Custom clearance



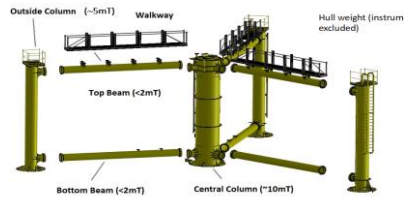
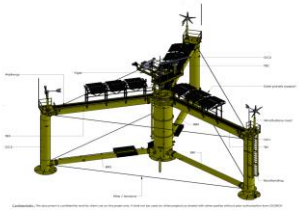
# Wind Mills Terminal

## Services provided by Euroports France:

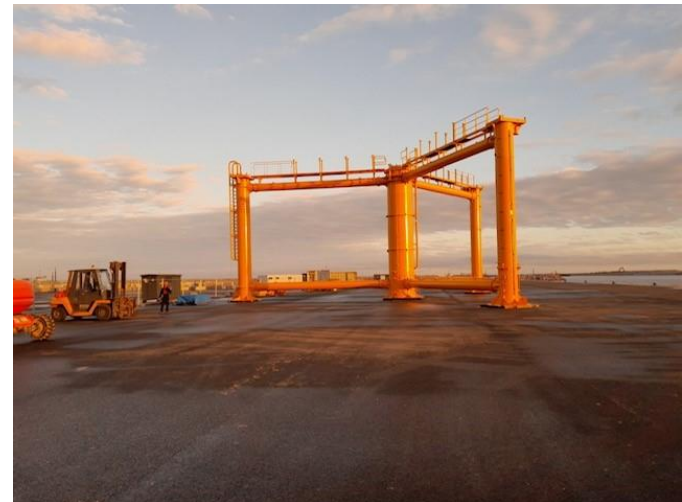
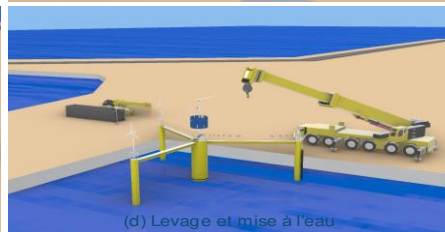
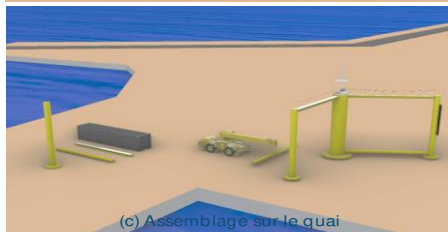
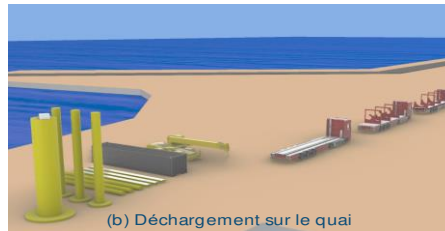
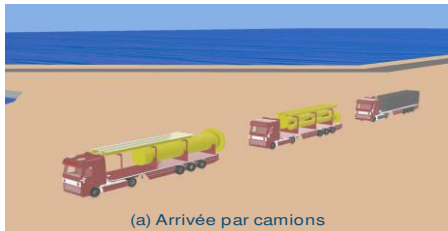
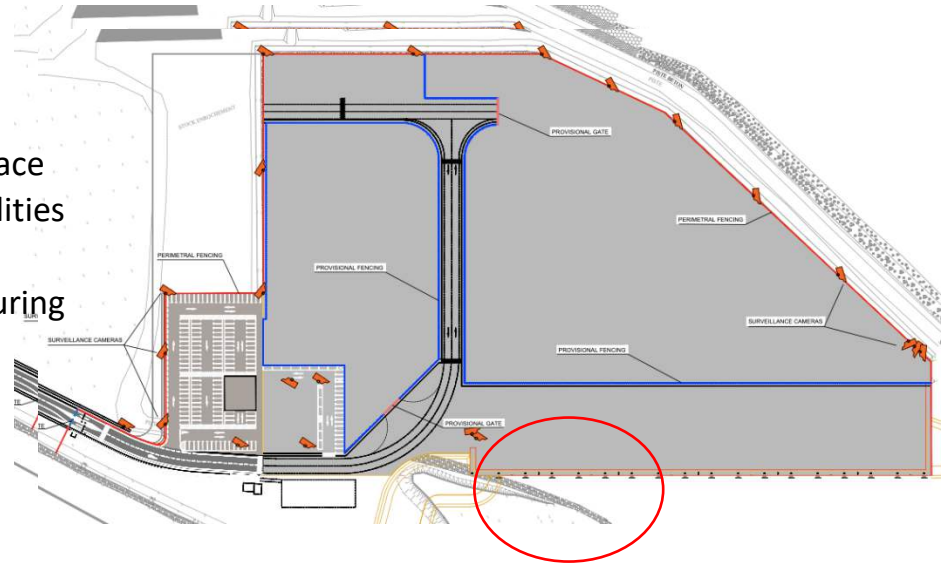
- Adéquation du terminal
- Base vie
- Management des interfaces et de la co-activity
- Management des relations avec SEMOP PLN et la Région
- Logistique, manutention roulage des navires de composants
- Management des interfaces pendant les opérations de float off et load out + assemblage turbine
- Shipping agency
- T&I port logistic support
- FEH logistic support
- Custom clearance



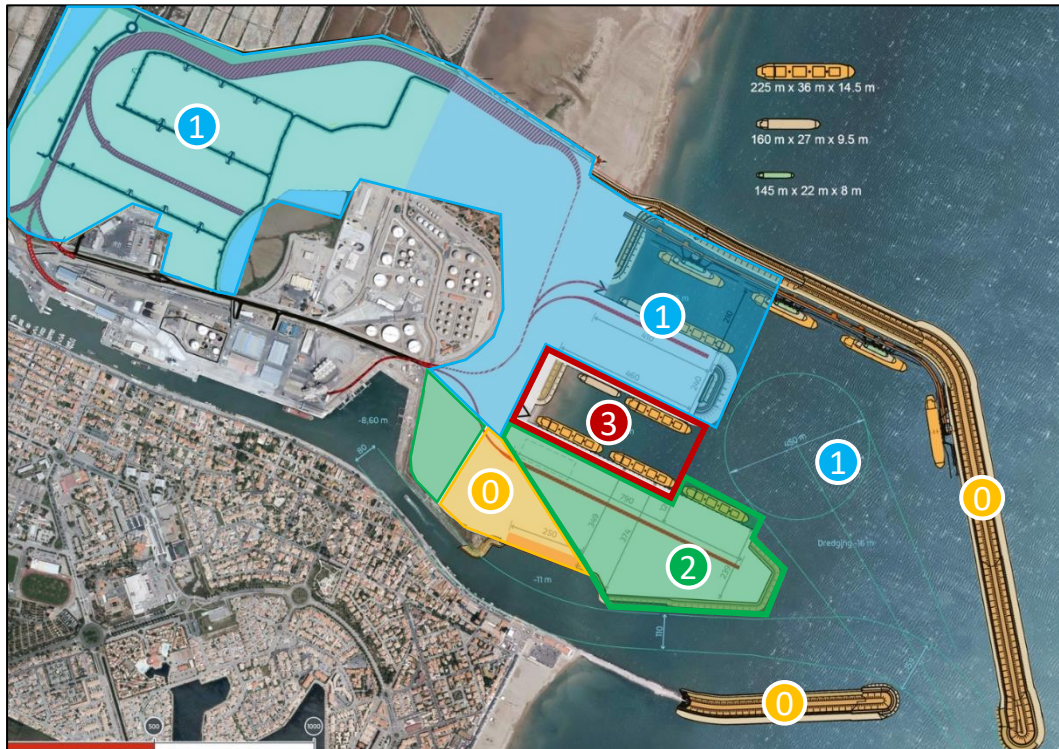
# Wind Mills Terminal



- i) Site accessibility, interface management, commodities and facilities
- ii) Assembly + handling during assembly
- iii) Lifting and launching

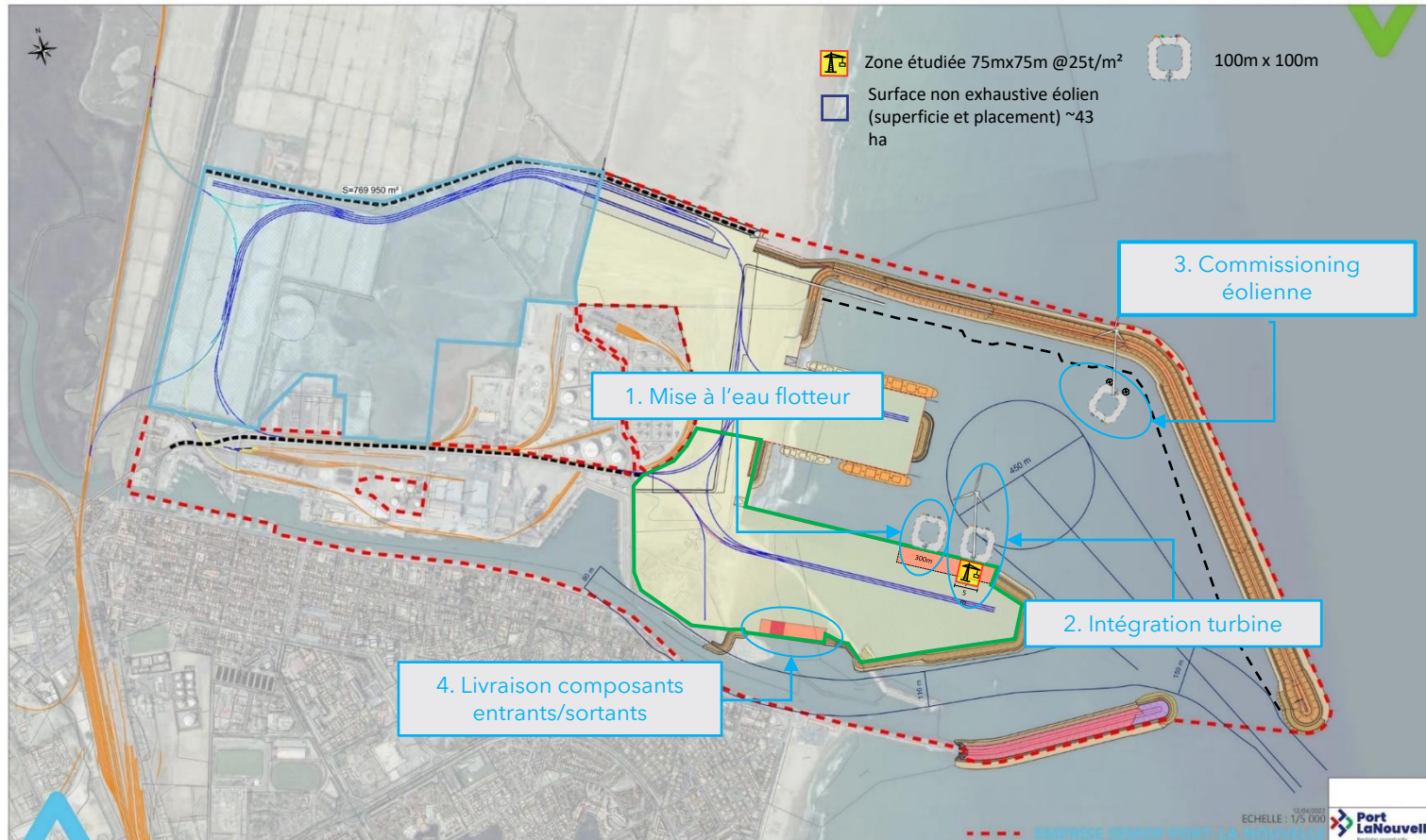


# 1. Initial port



- 201  
9 -  
202  
3
- 0 **Preliminary works - Region (Bouygues & SDI)**  
Extension of existing South breakwater (~600 meters)  
Construction of a new North breakwater to create a new harbor basin (2,5km)  
Shortening of existing North breakwater  
Construction of the Heavy lift quay (250m) dredged at -11.00 m ZH
- 202  
1 -  
202  
5
- 1 **Phase 1 - SEMOP**  
Construction of a bulk liquid berth,  
Dredging the new harbor basin to -15.9 ZH  
Construction of a new multi-purpose terminal ("Petit Môle") and 2 new berths  
Development of **port logistic park**
- 202  
2 -  
202  
5
- 2 **Phase 2 - SEMOP**  
Construction of a new **Grand Môle** of +22Ha connected to heavy duty berth  
Construction of 300m additional quay @ 10t/m<sup>2</sup>
- > 2030
- 3 **Phase 3 - SEMOP**  
Construction of multi-purpose quay south of petit mole (P6-P7)  
Construction of multi-purpose quay north of grand mole (P8-P9)  
Dredging of the small basin between the new docks

## 2. Lay-Out (projet)



## Wind Mills Terminal-STAGE 2 2027

### Services provided by Euroports France:

- Adequation du terminal
- Préparation du déploiement des unites industrielles (si existantes),
- Fourniture des bases vies
- Gestion du terminal, des interfaces et de la coactivité
- Gestion des interfaces avec SEMOP PLN
- Logistique des navires de composants
- Assemblage Turbines
- Load out & float off (by sub contractor)
- Shipping agency
- T&I port logistics
- Custom clearance

# Wind Mills Terminal-STAGE 2 2027

## Points forts d'un opérateur de terminal

- Mutualisation des investissements
- Mutualisation des moyens (cas spécifique des grues)
- Plannification et optimisation des quais
- Interlocuteur unique
- Assurances
- Respect des lois portuaire



# **EUROPORTS**

DELIVERING MARITIME SUPPLY-CHAIN SOLUTIONS

Euroports France-405, avenue Adolphe Turrel-Port-La