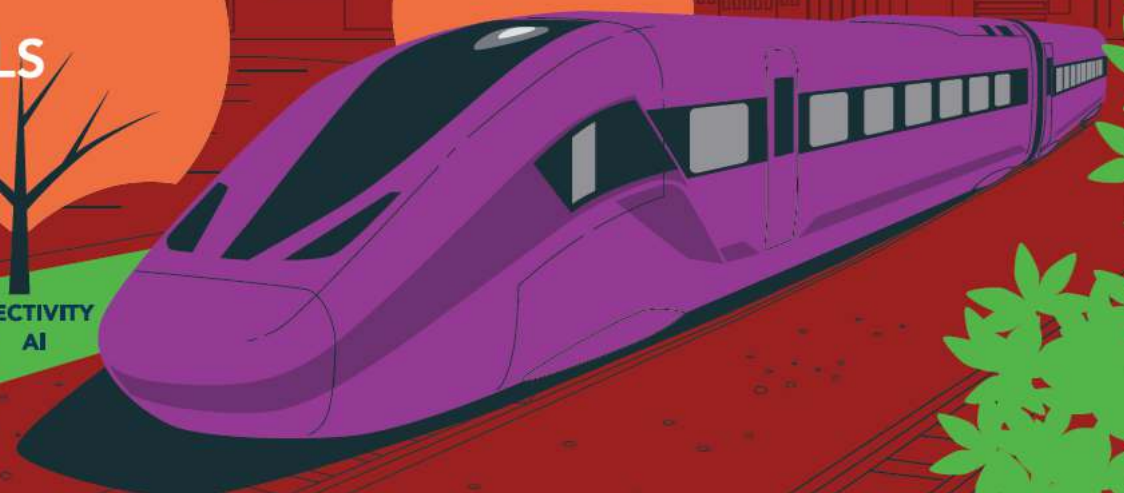


**IN OCCITANIE,
EMBEDDED SYSTEMS
ARE AT THE HEART OF OUR SKILLS**



TESTS AND TRIALS PASSENGER EXPERIENCE MRO
AUTOMATING ROBOTICS
POWER ELECTRONICS SECURITY
CERTIFICATE HYDROGEN
CYBERSECURITY AI
CONNECTIVITY



TRADESHOW SIFER 2023

DELEGATION

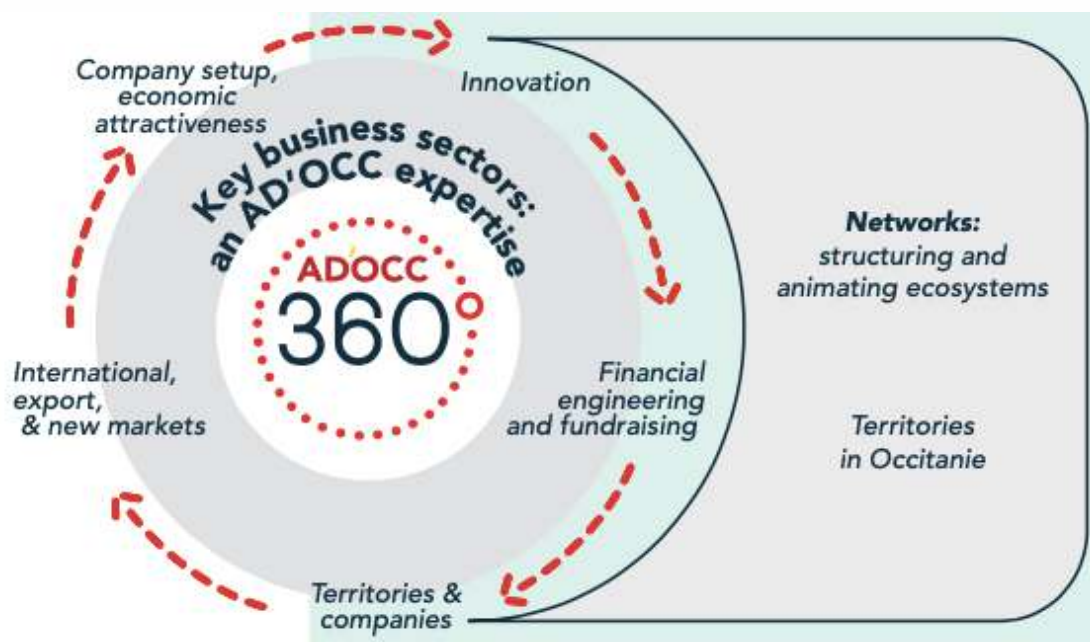
OCCITANIE REGION / CLUSTER TOTEM



AD'OCC is the economic development agency of the **Occitanie Region** in the south of France. We offer you free consultation to support **the set-up and development** of your office, factory, or lab in Occitanie. We also offer an in-depth knowledge of the local ecosystem including real estate, recruitment, legal advice and sectorial expertise.

AD'OCC also assists regional companies in their **international development**. This includes the participation in the major trade events throughout the world and leveraging the support of our international offices in NYC, London, Casablanca, Shanghai and Tokyo.

Let's talk over your development projects together!

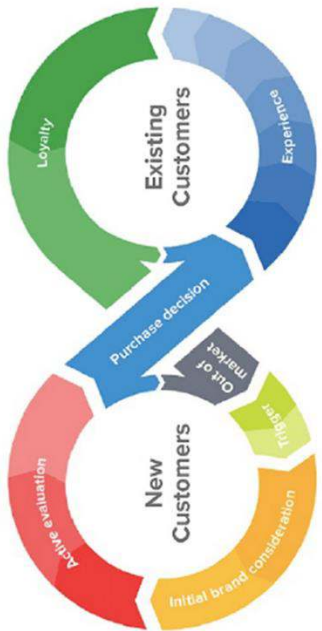


Mobility / transport exhibitions we plan to attend in 2023 :

- AEROMART (Montréal, April 4-6)
- SPACE SYMPOSIUM (Colorado Springs, April 17-20)
- M2S (Toulouse, May 30-31)
- AIRCRAFT INTERIORS (Hambourg, June 6-8)
- AEROMART (Nagoya, Sept. 26-28)
- RNTP (Clermont-Ferrand, Oct. 17-19)
- MRO Europe (Amsterdam, Oct. 18-19)
- SPACE TECH EXPO (Brême, Nov. 14-16)
- METSTRADÉ (Amsterdam, Nov. 15-17)
- NAUTIC (Paris, dec.)

TOTEM cluster, located in the Occitanie region/France, federates companies, research, and training institutions to develop partnerships in automotive, railway and maritime sectors.
Our DNA: Business, Innovation, Skill, employment, and training, to accelerate the transition to **intelligent and sustainable mobility**.
150 members, for 30,000 jobs

Why choose TOTEM



Saving time! You have at hand a wide range of qualified and experienced suppliers in the railway sector, who provide you with tailor-made solutions, in accordance to railway standards, and support you during your project. For each supplier, you have a company file, expertise, references, and you have a privileged interlocutor to discuss your needs. Then, start doing your sourcing strategy with TOTEM!

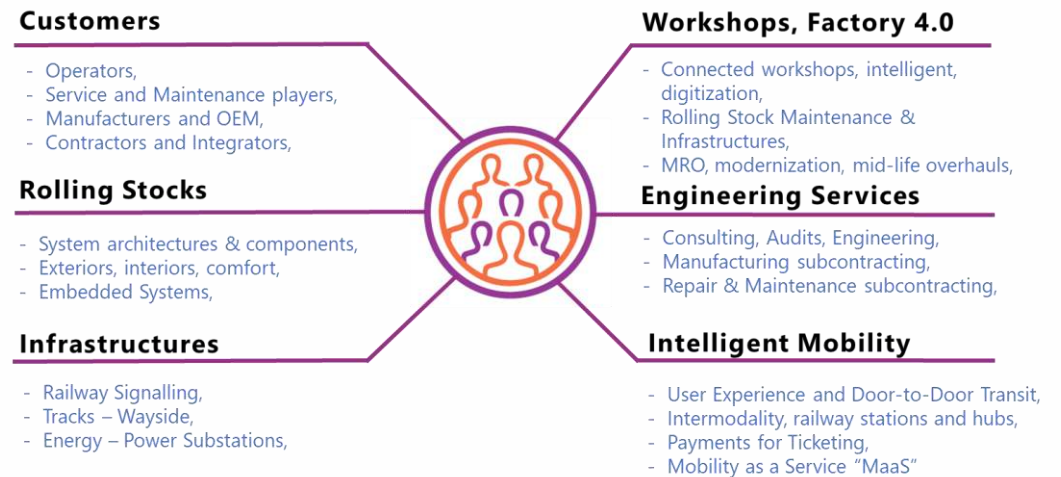
Cost optimization! Improve reliability, optimize maintenance management, reduce the frequency of the breaks in the technical services to improve maintenance costs. Gain in industrial performance, and opt for economical, long-lasting solutions.

Innovations! Up-stream, take advantage of our innovations to integrate them into your offers, personalize and differentiate yourself from the competition with your customers.

Business solutions for:

- High-Speed Trains & Regional Lines,
- Light Rail, Buses with a High Level of Service (BHLS),
- Rolling Stock, Infrastructures, Maintenance Workshops, Services, Mobility

Portfolio of solutions:



Where to meet our companies:

- SIFER trade fair in Lille (France): March 28-30, 2023
- Mobility Solution Show in Toulouse (France): May 30-31, 2023
- RNTF Congress in Clermont-Ferrand (France): October 17-19, 2023
- INNOTRANS trade show in Berlin (Germany): September 24-27, 2024

Companies from Occitanie region & Cluster TOTEM at SIFER Trade Fair 2023 on Booths n° 2-330, 2-430, 2-436

COMPANY	Booth n°	Main Activity	Web site	Page
AAA Railway	2-330	Industrial Service Provider and Intellectual Services.	http://aaa-railway.com	6
ACTI GROUP	2-436 K	Mechanical design & engineering, automation projects, handling equipments and specific machines, precision machining.	http://www.acti.group	7
ACTIA TELECOM	2-330 F	On-board passenger information systems, CCTV, On-board transmission, Power electronics, Safe railway announcement system.	https://railway.actia.com/	8
ADHETEC	2-330 A	Decorative adhesive films for railway industry, as well as customizable and standard floor coverings.	http://adhetec.com	9
AEREM	2-330 I	Studies and mechanical realizations on plans or specifications. Machined or sheet metal parts.	http://www.aerem.fr	10
ARCYS	2-330 E	SIL 3 and SIL 4 Analogic and Numerical Electronic Design. Standardize / Manufacture. Maintain in operational condition.	http://arcys.fr	11
ARIZE	2-330	Testing benches for battery. MCO helping device for batteries. Expertise and advice to manage your batteries.	http://www.clustertotem.fr/membres-totem/Arize	12
BROETJE AUTOMATION France	2-330	Conceptual design, ergonomic analysis, manufacturing cost optimization and management of CE files for tools. Manufacturing of industrial solutions. 3 production workshops: sewing, wood, composite and mechanical welding. Project management - Integration – Control.	http://www.broetje-automation.fr	13
CRM MECA	2-436 K	Machining nad mechanical welding.	http://www.crm-meca.fr/fr/	14
EXCENT	2-330	Industrial Solutions Designer and Integrator.	http://www.excent.f	15
GACHES CHIMIE	2-330 B	Chemicals storage & distribution.	http://www.gaches.com	16
GROUPE SEGNERE	2-330	Extensive expertise in the fields of General Precision Mechanics, Fine Sheet Metal, Structural Assembly and 3D Printing.	http://www.groupe-segnere.fr	17
HENSOLDT-NEXEYA France	2-330 G	Design, development, production and maintenance of electronic equipment.	https://www.hensoldt.fr	18
IGE+XAO Group	2-430 M	Software Editor in the electrical field for the harness cabling and electrical installations.	https://www.ige-xao.com/fr/	19

LEROY AUTOMATION	2-430 M	Design, integration, manufacturing and maintenance/repair of embedded electronic systems for railway control solutions: TCMS, traction, signalling and power distribution.	http://www.leroy-automation.com	20
MCE	2-330	Assembly Lines.	https://www.mce-hg.com/	21
MINILAMPE	2-436 J	Design, Development and realization of bespoke lighting solutions.	http://www.minilampe.com	22
PROCONNECT	2-436 J	Manufacturer in the conception of industrial connectors.	https://www.proconnect.fr	23
RAILWAI	2-330	Railway maintenance optimization software.	https://www.railwai.com/	24
SOPLAMI	2-330 F	Thermoforming expert Mastery of plastic transformation techniques (thermoforming, machining, assembly, painting).	https://soplami.fr	25
SPHEREA TEST & SERVICES	2-330 F	Design & manufacturing of testing solutions MRO, Obsolescence management of electronic systems.	http://www.spherea.com	26
VECTOR France	2-330 C	Solutions and services for the creation of embedded systems. Embedded systems test tools.	https://www.vector.com/fr/fr/produits/industries/railway/	27

Other companies from Occitanie & Cluster TOTEM at SIFER Tradeshow 2023

Company	Booth N°	Web Site
ACC-M	3-228	https://www.acc-m.fr/index.htm
ALTEN	2-557	https://www.alten.fr/
DIPOSTEL	3-340	https://dipostel.com/
EQUANS	3-118	https://www.equans.fr/
HEXIS	1-558	https://www.hexis-graphics.com/fr/
NEOTEC	2-618	https://www.neotec-france.com/fr/accueil/
RAILCOOP	3-329	https://www.railcoop.fr/
ALSTOM	1-238	https://www.alstom.com
SIEMENS MOBILITY	2-668	https://www.mobility.siemens.com





AAA Railway

Application market: Railway

Status: (Company)

10 rue Mercœur 75011 PARIS (France)

Web site : <http://aaa-railway.com>

Main activity:

Industrial Service Provider and
Intellectual Services

Contact:

Mathieu BAOUDOUR
Sales Director

Tel: +33 6 09 72 08 54

email address:

[mbaoudour@aaa-](mailto:mbaoudour@aaa-aero.com)

[aero.com](mailto:mbaoudour@aaa-aero.com)

Presentation:

Service provider: our teams intervene directly on customers' sites or their suppliers.

International Group including the following sectors: Aeronautics, Railway, Naval & Nautical industry, Energy.

30 years of experience in supporting the main Contractors.

Worldwide representation (15 countries)
Intervention during all the life cycle and a wide range of products / processes.

Main railway services:

- Industrialization and manufacturing engineering
- Installation and integration
- Quality
- Supply chain support
- Maintenance and after sale service

Main Customers & References:

ALSTOM

CAF

APTIS

NOMA TD

STRATIFORME

SATYS

Deployment of staff for floor retrofit, laminated composite molding/projection, covering, cable installation, electrical methods.

Type:

Medium-sized company

Nb of employees:

3000 including subsidiaries

Turnover:

175000 K€

Skills:

Support to industrialization, production, maintenance, supply chain, quality inspection, organization and continuous improvement.

Certifications:

ISO 9001

Worldwide:

Intervention in more than 15 countries and 4 continents
9 geographic subsidiaries worldwide

Other contac: David MICELI - Tel: + 33 6 62 84 64 87





ACTI GROUP

Railway Market

Status: (Company)

260 rue de la Mairie, 12160 Baraqueville

Web site: <http://www.acti.group>

Main Activity:

Mechanical design & engineering, automation projects, handling equipments and specific machines, precision machining.

Contact:

Christophe De LAFORCADE
 Commercial Director
 Tel: +33 6 33 15 75 63
 email address:
christophe.de-laforcade@acti.group

Presentation: <p>ACTI GROUP is a French integrated leader specialized in mechanical design and engineering, automation projects and specific machines, as well as precision machining. We serve various industries such as railway, energy, space or defence. ACTI GROUP is present on 5 sites : Toulouse, Bagnères de Bigorre, Baraqueville, Grenoble and Montreal (Canada).</p>		Main rail products: <ul style="list-style-type: none"> - Personalized Mobile Elevating Work Platform - Railway platform gap filler - AGV (bogies, heavy loads) - Test and control bench (motors, switches) - Alarm box - Maintenance equipments - Engineering (design and calculations) 		Main Customers & References: <p>ACTI GROUP is a major actor in the maintenance environment through the design and fabrication of equipments used in work at heights, lifting and handling. We are also strongly committed in maintenance cycles optimization programs and operators safety.</p>	
Type: SME	Skills: Engineering Automation Robotics Precision machining Technical consulting services	Certifications: <ul style="list-style-type: none"> - ISO 9001 - EN 9100 - COFREND 2 - COFFMET 	International: <ul style="list-style-type: none"> - Subsidiary in Montreal, Canada - Export to various European countries and to Asia 		

Other contact: Nicolas Morisson, Assistant General Manager, nicolas.morisson@acti.group





ACTIA TELECOM

Railway market

Status: (Company)

Route de Mayres – CS 40312 Saint Georges de Luzeçon
12103 MILLAU Cedex (FRANCE)

Web site : <https://railway.actia.com/>

Main Activity:

On-board passenger information systems, CCTV, On-board transmission, Power electronics, Safe railway announcement system

Contact:

Christian Le BORGNE
Head of Rail Division
Tel: +33 6 98 27 19 61
email address:

christian.leborgne@actia-telecom.fr

<p>Presentation:</p> <p>The railway sector faces major challenges related to, among other things, globalisation, digital revolution, decarbonisation and transport safety which are reshaping the passenger experience. Seizing this opportunity for nearly 20 years, ACTIA is at the heart of these technological challenges for intelligent, safe and connected rail mobility.</p> <p>ACTIA is a major historical player in this market for the design, manufacturing and commercialization of video protection, rear-view, PAPIS (passenger information), infotainment for trains, trams and metro systems and for the safety of workers on the trackside.</p> <p>In a constant quest for improvement, ACTIA continues to innovate in real-time video surveillance supervision, in advanced image analysis and processing functionalities (AI), and in electronic architectures based on the latest technological innovations and standards (ITxPT).</p>		<p>Main rail products:</p> <p>Video protection Rear-view PAPIS Infotainment Trackside safety systems</p>		<p>Main Customers & References:</p> <p>We are suppliers of PAPIS, CCTV, Blackbox, rear-view solutions for the major actors of the railway market: ALSTOM, SNCF, CAF, RATP, SIEMENS, ...</p> <p>We are involved in French and international programs such as MP14, RER NG, MF19, CCTV, SNCF markets, Tram XO5 (cities: Avignon, Caen, Kaohsiung, Nice, Paris, Sydney, ...), VAL.</p>	
<p>Type: Intermediate-sized company</p> <p>Nb employees: ACTIA: more than 3700 (ACTIA Telecom: more than 350)</p> <p>Turnover: ACTIA 462.8 M€ (ACTIA Telecom 64,4 M€)</p>	<p>Skills: Digital (IoT, 5G, AI...) Electronics Security (Cyber)-security</p>	<p>Certifications:</p> <ul style="list-style-type: none"> - ISO 9001 - ISO TS 221 63 (IRIS) - IS45001 - ISO14001 - ECOVADIS Silver 	<p>International: ACTIA is an international group established in 16 countries (Europe, Africa, America & Asia) Our railway activity is present in France, Spain and Germany.</p>		

Other contact: Corine Salvetat, Directrice Unité Rail - Tel: +33 6 18 48 24 17





ADHETEC

Railway market

Status: (Company)

1 RUE PIERRE LATECOERE 65000 TARBES

Web site: <http://adhetec.com>

Main Activity:

Specialized in decorative adhesive films for railway industry, as well as customizable and standard floor coverings.

Contact:

Lela KLOCZKO
Marketing Manager
Marketing Officer
Tel: +33 6 08 48 60 57
email address:
lela.kloczko@gmail.com

Presentation: ADHETEC is specialized in decorative adhesive films for railway industry, as well as customizable and standard floor coverings. ADHETEC is specialized in decorative adhesive films for railway industry, as well as customizable and standard floor coverings.		Main rail products: <ul style="list-style-type: none">- ADHEWALK® Customfloor: Customizable flooring with no design limitations or minimum order size- ADHESKIN®: Interior design films for railways- ADHEWALK® Customfloor: Customizable floor covering, ni design limitation and no MOQ- ADHESKIN®: Interior decofoils	Main Customers & References: ALSTOM SNCF COMPIN SATYS FAINSA ...
Type: SME Groupe ALVEST Nb employees : Turnover : 37K€	Skills: Custom made cutting Unlimited customization Cutting to size Unlimited customization	Certifications: <ul style="list-style-type: none">- ISO 14001- ISO 9100- Ecovadis (Silver)	International: International





AEREM

Railway market

505 Avenue du Roulage
32600 PUJAUDRAN (France)

Web site: <http://www.aerem.fr>

Main activity:

Studies and mechanical realizations on plans or specifications
Machined or sheet metal parts.

Contact:

Guillaume TARAVELLIER
Sales Manager
Tel: +33 6 85 10 51 37
email address:
Guillaume.taravellier@erem.fr

Presentation: AEREM is a cooperative company specializing in the study and mechanical production. We integrate an in-house design office as well as machining, boilermaking and assembly workshops, allowing us to offer a complete service in the manufacture of parts or mechanical assemblies (specific tools, walkways, etc.), on plan or specifications. Our EN15085-1 certification also allows us to respond to contractors to produce rolling stock parts.		Main rail products: - Specific mechanical tools on plans or specifications -Machined or sheet-metal mechanical parts (EN15085-1), all types of materials -Studies and realizations of custom-made assembly or lifting systems (spreaders, platforms, etc.) with CE certification and calculation notes		Main Customers & References: -ALSTOM -SIEMENS -TISSEO -SNCF (in row 2)	
Type: PME	Skills: Mechanical studies Machining Mechanical welding Integration	Certifications: - -ISO 9001 - -EN 9100 - -EN 15085-1	International: - -Belgium - -Morocco		
Nb employees: 75					
Turnover: 9200 K€					





ARCYS

Market: Rail

Status: SAS

14, Place Marcel Dassault
B.P. 70048 – 31702 BLAGNAC Cedex

Web site: <http://arcys.fr>

Main activities:

SIL 3 and SIL 4 Analogic and Numerical
Electronic **Design**

Standardize / Manufacture

Maintain in operational condition

Contact:

Thierry MAZON
Business Development
Manager

Tel: +33 6 45 78 86 32
email address:

thierry.mazon@arcys.fr

<p>Presentation:</p> <p>ARCYS is a 51% subsidiary of TechnicAtome and 49% of Framatome, based in Blagnac since 1975. It is an SME of 140 employees, which designs, develops, qualifies, manufactures, sales and maintains in operational condition safety electronical equipments and instrumentation dedicated to harsh environments (trains, subways, submarines, nuclear power plants...). The company operates in the Railway Transport, Defence and Civil Nuclear Markets.</p>		<p>Main rail products:</p> <p>Safety computing hardware (IS) of the MF2000, MP14 and MF19 programs for ALSTOM in the renovation projects of the Parisian subway (Lines 5, 9, 6, 11 and 14): Emergency braking, dead man switch, opening/closing of doors, overspeed detection.</p> <p>Automatic Pilot: ATP/ATO of the OCTYS program for ALSTOM in the renovation projects of the Parisian subway (Lines 5, 6, 9, 10 and 11): Automatic Train Protection and Automatic Train Operation.</p> <p>Overspeed detection and signal crossing protection - BCM/ECFA for ALSTOM: Emergency brake application while overtaking or signal crossing in the subway of Rouen and Marseille (France), of Brussels (Belgium) and of Constantine (Algeria).</p> <p>MEMO readers (EPE): Re-design of memory card readers (speed parameter recorder) for RATP.</p>		<p>Main customers / Rail and urban references:</p> <p>In the transport area, ARCYS provides solutions for ALSTOM, SNCF, RATP and SIEMENS.</p> <p>TECHNICATOME, NAVAL GROUP, CEA (Defence) FRAMATOME, EDF, ORANO, CGN (Civil Nuclear)</p>	
<p>Key figures:</p> <p>SME</p> <p>Nb of employees:</p> <p>140</p> <p>Total Turnover:</p> <p>24 M€</p>	<p>Skills and know-how:</p> <p>Design of Analogue and/or Digital Safety Electronics Operating Safety Environmental qualifications Mechanical design</p>	<p>Certifications:</p> <ul style="list-style-type: none"> - ISO 9001 - ISO 45001 - ISO 19443 	<p>International markets:</p> <p>Mainly in the Civil Nuclear Market (China, UK and Germany)</p> <p>Belgium and Algeria for Rail Transport Market</p>		

Other contact: **Olivier Auzenet** – Sales Director - Tel: +33 6 07 62 74 06





ARIZE SAS

Railway market

Status: (Entreprise SAS)

1 Place Alfred Sauvy – 31270 CUGNAUX

Web site: <http://www.clustertotem.fr/membres-totem/Arize>

Main activities:

- Testing benches for battery
- MCO helping device for batteries
- Expertise and advice to manage your batteries

Contact:

Frédérique RUFFEL
 CEO
 Tel: +33 6 61 97 49 89
 email address:
frederique.ruffel@arizesas.fr

<p>Presentation:</p> <p>For more than 33 years, Arize has been designing devices for the maintenance of batteries. This expertise allows to improve maintenance relevance.</p> <p>Main areas: Railway, Nuclear Power Plants, Battery manufacturers.</p>		<p>Principaux produits Rail / Main rail products:</p> <ul style="list-style-type: none"> • Fixed or mobile Load / Unload benches • Fully automatic benches for HST, level 2-3 maintenance • High-rapid Unloader benches for level 4 maintenance • Expert battery software • Management software for battery fleet 		<p>Railway Customers:</p> <p>Rolling Stock SNCF, ONCF, Eurotunnel, ... All TGV Technicenters SnCF Centralized batteries Workshop</p> <p>Mobility - Kéolis, CTS, RTM, Semitan, ...</p> <p>Infrastructures - Rail Signalling - Mean Voltage - SNCF, Mesea, Ocvia, SafeRail, ...</p>	
<p>Type: SME</p> <p>Nb Employees: 12</p> <p>Turnover: 660 K€</p>	<p>Skills: Power electronics, Test, Security, IoT, AI, technical softwares, Traceability</p>	<p>Certifications: CE</p>	<p>International: Marocco, Belgium,</p>		

other contact: Magaly CHABAGNO-COULON - Tel: +33 7 67 45 21 93 – arize.clients@arizesas.com



BA FRANCE

Railway market

Status: (Company)

41 bis avenue Jean Monnet 31770 Colomiers, France

Web site: <http://www.broetje-automation.fr>

Main activity:

Conceptual design, ergonomic analysis, manufacturing cost optimization and management of CE files for tools
 Manufacturing of industrial solutions
 3 production workshops: sewing, wood, composite and mechanical welding
 Project management - Integration -

Contact:

Bertrand RUMEAU
 Technico commercial
 Tel: +33 6 78 78 34 71
 email address:
bertrand.rumeau@broetje-automation.fr

<p>Presentation: BA France is part of Broetje-Automation GmbH Group, which is present in 7 countries and counts 600 employees. BA France is the competence center for operational tooling, consulting and services. With its headquarters in Toulouse and a presence in St Nazaire, BA France supports you in the field of operational tooling for industrial applications. Thanks to our global presence and our strong project management, we equip your factory of the future. This includes the equipment but also the service, the digitalization and the implementation of the process so you can work in efficient and safe environment.</p>		<p>Main Rail Products: Safety systems for metro doors Mechanical/hydraulic tools for the maintenance of Metros, Trams and Buses (luggage boxes, seat installation...) Custom-made lifting tables Bench Test Sanding Cobot, riveting, jointing, painting Paint room and weather protection Interior Protections (realization of carpets) Smart RFID Roller Cabinet Expert in ergonomic and safety tools</p>	<p>Main Customers & References: TISSEO SIEMENS AIRBUS GROUP (Operation, Defense and Space) GOODRICH / Collins CNES HEMERIA ...</p>
<p>Type: Groupe Broetje-Automation GmbH Employees : 600 Turnover : 150 000K€</p>	<p>Skills: Design, project management and our ability to propose innovative solutions to our customers. We offer connected, secure and ergonomic means</p>	<p>Certifications:</p> <ul style="list-style-type: none"> - ISO14001:2015 - ISO 9001: 2015 - ISO45001:2018 - Welding Standard 15085 	<p>International:</p> <ul style="list-style-type: none"> -Europe : Germany, Italy, Belgium, Spain, Portugal -North America -China

Other Contact: Dominique MELKI DELCASSE – President BA France – dominique.melki-delcasse@broetje-automation.fr





CRM MECANIQUE

Application market(s): Rail

Status: SAS

Plateau de la Grillatié – 81400 Blayes-les-mines

Web site: <http://www.crm-meca.fr/fr/>

Main activity:

Machining and mechanical welding

Contact:

Alfred MAUEGAIS

Technical sales

Tel: +33 7 78 81 50 30

email address:

[a.maugeais@crm-](mailto:a.maugeais@crm-meca.fr)

[meca.fr](mailto:a.maugeais@crm-meca.fr)

<p>Presentation: CRM specializes in Precision Industrial Mechanics for the production of high value-added mechanical parts and assemblies of medium and large dimensions. The company's expertise and production capabilities in mechanical welding and precision machining can meet all type of needs. CRM consist of 3 Prodcution Units in Tarn and Aveyron, wich are</p> <ul style="list-style-type: none"> - Méca TS (81400 BLAYE-LES-MINES) - CRM Méca (81400 BLAYE-LES-MINES) - Mécaveyron (12850 ONET-LE-CHÂTEAU) 		<p>Main rail products: All types of bogie parts Obstacle hunting All types of tooling</p>		<p>Customers & References: SNCF RATP TISSEO SNCBE ALSTOM</p>	
<p>Type: PME</p> <p>Employees : 50</p> <p>Turnover : 5M5€</p>	<p>Skills: Precision Machining Mechanical welding</p>	<p>Certifications:</p> <ul style="list-style-type: none"> - ISO9001 - EN9100 - EN15085 – Rang 1 - IRIS ISO/TS22163 - COFREND 2 - CND 	<p>International: Kazakhstan</p>		

Other contact: Alexandre BERNARD – a.bernard@crm-meca.fr





EXCENT FRANCE

Railway market

Status: (Entreprise)

2 avenue Léon Foucault - ZAC du Perget 31770 Colomiers

Web site: <http://www.excent.fr>

Main activity:

Industrial Solutions Designer and Integrator

Contact:

Lina SUAREZ
Business development
Manager
Tel: +33 6 32 33 98 58
email address:
lina.suarez@excent.fr

<p>Presentation: Industrial solutions designer and integrator, eXcent group places the problems of its customers at the heart of its thinking. Present on 12 sites in France and 5 abroad, eXcent group has 700 employees for a turnover of 90M€ in 2022.</p> <p>Its global industrial vision, its proximity and its technical expertise allow eXcent to offer high-performance, ergonomic and optimized technological solutions.</p>		<p>Main rail products:</p> <ul style="list-style-type: none"> - Design, sizing, industrialization and prototyping of tools up to turnkey assembly lines - Specialized team in interior design, carbodyshell and system installations <p>Platforms and access Toilets Bar wagon Air conditioning Seats Composite Roof light</p> <ul style="list-style-type: none"> - Industrial maintenance 		<p>Main Customers & References:</p> <p>Alstom, SNCF, RATP, CAF, Siemens Mobility, Michelin, Satys, Safra, Neotec, Masteris, Vossloh, SCIT Equipements, Barat Group.</p> <p>Strong involvement in high -speed trains (TGV 2020), daily trains (Regiolis), tramways (Citadis), Bus (Aptis) and Metro.</p> <p>Special machines, smart cart, handling, lifting, maintenance of rolling stock, tools and turnkey solutions.</p>	
<p>Type: ETI</p> <p>Employees: 700</p> <p>Turnover: 90 M€</p>	<p>Skills: Mechanical engineering, robotics, calculation, material analysis, maintenance</p>	<p>Certifications:</p> <ul style="list-style-type: none"> - ISO 9100 - ISO 9001 - MASE - Habilitation DGA 	<p>Abroad:</p> <ul style="list-style-type: none"> - UK - Romania - Germany - Etats Unis 		

Other contacts: **Mathieu Nunes** - Tel: +33 6 12 53 01 56





GACHES CHIMIE

Railway market

Status: GACHES CHIME SPECIALITES SAS
8 RUE LABOUCHE 31000 TOULOUSE FRANCE

Web site : <http://www.gaches.com>

Main Activity:

Chemicals storage and distribution

Contact:

Fabrice COT
BUSINESS DEVELOPMENT
Tel: +33 6 63 68 23 83
email address:
fcot@gaches.com

<p>Presentation:</p> <p>Gaches Chimie is a French independant group of 380 people acting in 6 countries.</p> <p>Gaches Chimie Buys Stores and proposes logistics of chemical products. Through its technical expertise, helps customers towards product / process solutions. Gaches Chimie got his own Document center: SDS, TDS, CoC. Regulatory monitors and umpgrade datas. –</p> <p>Identification of obsolescence risks, prevention of end-of-life risks. Gaches Chimie operates in the rail, space, aeronautics and energy markets.</p>		<p>Main products:</p> <p>Chemical products</p> <ul style="list-style-type: none"> - Bonding, Filling and Potting, Film adhesives - Fuel tanks-, fuselage- and low-density sealants, silicon rubber compounds - Paint Systems and Coating - Oils, Greases and Lubricants - Surface Treatment <ul style="list-style-type: none"> o Chemicals: Aircraft Cleaners, Paint Strippers, NDT materials o Mechanical: Abrasiv, - Wipes and Pre-impregnated wipes - Raw Chemicals <ul style="list-style-type: none"> o Inorganic: Acid & Basics o Organic: Solvents, Acetone, MEK... - Equipement Protection Individuel (EPI) 		<p>Main Customers & References:</p> <p>SAFRAN THALES DASSAUL ROXEL ALSTOM CAF</p>	
<p>Type:</p> <p>SARL fonded 1948 100% french and family owned 380 employees throught 6 countries</p>	<p>Skills:</p> <p>Chemical product volume and hazardousness</p> <p>3 plants classified SEVESO II high</p>	<p>Certifications:</p> <ul style="list-style-type: none"> - ISO9001 & ISO 14001 - Aerospace distribution EN 9120 - EN 9100 et accrédité NAD CAP 	<p>International:</p> <ul style="list-style-type: none"> • EUROPE • ASIA • AFRICA • CANADA – UNITED STATES <p>Facilities: France - Canada – India – Mexico – Maroco - Tunisia</p>		





Groupe SÉGNERÉ

Railway market

Status: SAS

ZI DU TOULICOU ADE 65100

Web site: <http://www.groupe-segnere.fr>

Main activity:

Extensive expertise in the fields of General Precision Mechanics, Fine Sheet Metal, Structural Assembly and 3D Printing

Contact:

Kévin CRIADO
Development Manager
Tel: +33 06 47 41 76 35
email address:

k.criado@groupe-segnere.com

<p>Presentation:</p> <p>For more than 50 years, the Ségneré Group has proven its ability to support the evolution of modern industry in the fields of General Precision Mechanics, fine sheet metal and structural assembly. Participates in innovation with a 3D printing service</p>		<p>Main products Rail:</p> <ul style="list-style-type: none"> - 24-finger pliers - Onix box set - Polar plates - Contactor bracket assembled - Air intake pavilion - Capacitor holder equipped. - Terminal holder + resistance 		<p>Customers & references:</p> <p>ALSTOM / CAF /SAFT / BROETJE / BRM AIRBUS /DAHER /DASSAULT/ LATECOERE / LAUAK / MAHINDRA ...</p>	
<p>Type: PME</p> <p>Number of employees: 120</p> <p>Turnover: 12 000K€</p>	<p>Skills: Mechanical welds Mechanical General of precision Sheet metal and structural assembly.</p>	<p>Certifications:</p> <ul style="list-style-type: none"> - EN9100 - ISO 1401 - ISO 9001 - EN 15085-2 	<p>International: France Tunisie</p>		





HENSOLDT NEXEYA FRANCE

Railway market

Status: Entreprise

Golf-Park, 1 Rdpt du Général Eisenhower Bâtiment F,
31100 Toulouse

Web site: <https://www.hensoldt.fr>

Main Activity:

Design, development, production and maintenance of electronic equipment

Conception, développement, production et maintenance d'équipements électroniques

Contact:

Anthony LEIB
Program Manager
Tel: +33 6 71 53 98 19
email address:
anthony.leib@hensoldt.fr

Presentation: HENSOLDT NEXEYA FRANCE has a strong background in safety-critical electronic systems. For the railway industry, the company develops and manufactures solutions for systems testing, simulation and integration, on-board and ground power solutions to secure and maintain installations and solutions for production and maintenance lines.		Main rail products: <ul style="list-style-type: none"> - Platforms for test, system integration, simulation and digital twins - Power conversion solutions and energy systems for on-board and ground applications - Mechanical solutions for production and maintenance - Electrical interconnect test solutions (cable, harnesses, ...) - Maintenance in operational conditions and equipment renovation 		Main Customers & References: ALSTOM SIEMENS Mobility HITACHI Rail RATP SNCF KEOLIS	
Type: ETI Nb employees: 600 Turnover: 120 K€	Skills: Embedded Electronics, Engineering, Testing, MCO	Certifications: <ul style="list-style-type: none"> - EN9100 - ISO9001 	International: Europe, Asia, USA, Canada, Africa		

other contact: Cyril BATAILLE - Tel: +33 6 23 77 76 07 – cyril.bataille@hensoldt.fr



Presentation:

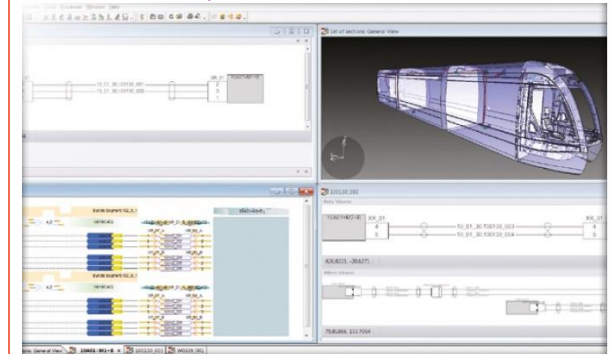
For over 35 years, the IGE+XAO Group has been a software publisher designing, producing, selling and ensuring the maintenance of a range of Computer Aided Design (CAD) and Product Lifecycle Management (PLM) software. These software products have been designed to help manufacturers in the design and maintenance of the electrical part of any type of installation. With Prosyst take over and our sister company ALPI, IGE+XAO also offers a complete software range for electrical installation dimensioning and functional simulation.

Main rail products:

Our product portfolio provides a seamless solution to ensure the digital continuity among the electrical field. Our products are covering the entire needs of the electrical installations for the engineering, the manufacturing and the maintenance for the rollingstock or the infrastructure market. We are providing professional solutions based upon the experience of our partners among the railway industry. As an example, IGE+XAO, is member of the C.O.E (Center of Excellence for the Electrical) from Alstom as electrical software editor. This partnership consists in providing software, infrastructure, and dedicated experts to support the conception and the manufacturing of the electrical cabling. Our modular solutions and our international footprint are key factor to support our customers on their business evolution.

Main Customers & References:

Alstom, Faiveley, Pesa, SNCF, Vossloh ...



Type:

ETI

Nb employees:

390

Turnover:

36.3 Million Euros (2021)

Skills:

Dimensioning, definition, routing of signal/wires/cables/harness, manufacturing and maintenance of electrical installations and complex cabling

Certifications:

International:

30 IGE+XAO affiliates and branches in 22 countries. 37 business partners in 30 countries





LEROY AUTOMATION

Market: Railway

Status: Active company

250 rue Max Planck – 31670 LABEGE (France)

Web site: <http://www.leroy-automation.com>

Main activity:

Design, integration, manufacturing and maintenance/repair of embedded electronic systems for railway control solutions : TCMS, traction, signalling and power distribution.

Contact:

Sebastien MAURY
Business Development Manager
Tel: +33 668 535 286
email address:
sebastien.maury@leroy-autom.com

Presentation:

Leroy Automation, a member of AGON Electronics, designs, manufactures and repairs embedded electronic systems for railway applications including **train control and monitoring systems (TCMS)**, **traction subsystems**, **rail signalling equipment (ETCS, CBTC, ERTMS)** and **power substation automation**.

Our skilled engineering teams accompany our strategic partners during their projects for the **industrialization** and **qualification** of electronic products according to the **EN 50155** railway standard.

Main railway products:

- Vehicle Control Units (VCU)
- Programmable Logic Controllers (PLC)
- Remote I/O Modules (RIOM)
- Train Fieldbus Communication Gateways



Main Customers & References:



Type:

SME

Staff:

70 employees

Turnover: 19 M€

Skills:

System Architectures

RAMS Analysis Studies

SIL2 Safety Solutions

Obsolescence Management

Certifications:

- ISO 9001:2015
- IRIS - ISO/TS 22163 (SILVER)
- ECOVADIS (SILVER)
- AEO-F

International:

- Europe, Middle East, India and Africa
- North and South Americas (United States, Canada, Chile)
- Asia-Pacific (China, South Korea, Japan)
- Business development office in Montreal, QC (Canada)



Other contacts: la.com@leroy-autom.com





MCE GmbH

Business: Railway

Status: (Company)

69 avenue de Cornebarrieu – Bât.A, 31700 Blagnac

Web site: <https://www.mce-hg.com/>

Main Activity:

Assembly Lines

Contact:

Bruno VIDAL

Sales Director

Tel: +33 6 08 85 57 43

email address:

bruno.vidal@mce-hg.com

Presentation:

MCE GmbH is an Austrian General Contractor and Integrator for Assembly lines, Transportation jigs & containers and Test means.

Our wide range of Expert Know-How in all relevant fields of Technology allow us to offer technical solutions for demanding requirements and our project teams and experts respond to the requirements of our customers with tailor-made, individual solutions.

Our activity covers all the project lifecycle: engineering, construction and commissioning, supply chain management and expediting, operation and maintenance, project management and quality.

Main Rail Products:

Design, engineering, manufacturing and installation of:

- Entire Production Lines for Structural & Equipment
- Assembly Jigs and Tools

Main Customers & References:

Our main customers are currently in the aerospace and automotive industries: Airbus, PAG, OHB, Daimler, BMW

Type: SME

Nb employees: 465

Turnover: 1,360 K€

Skills:

Steel work
Mechanical equipment
Command-control
Automation

Certifications:

- ISO 9001
- ISO 9100
- ISO 45001
- ISO 14001
- EN 1090-1 EXC 3
- ISO 3834-2
- HPQ EXC3DB
- EN 15085 CL 1

International:

European countries
China



MINILAMPE

Railway market: Rolling stock & infrastructure

895 Chemin de Maquens, ZI La Bouriette, CS30029 11890
Carcassonne Cx France

Web site: <http://www.minilampe.com>

Main Activity:

Conception, développement et réalisations de solutions d'éclairage sur mesure
Design, Development and realization of bespoke lighting solutions

Contact:

Sylvie THOMAS
Commercial Manager
Tel: +33 6 48 45 68 68
email address: sthomas@minilampe.com

Presentation:

Design & realization of bespoke lighting solutions (lamps & lighting systems)
Custom made lighting systems according to customer's specifications, LED retrofit, Solutions to obsolescence, Smartlighting

Main Rail Products:

new & renovation / rolling stock and Infrastructures
LED tubes, Strip LED
Spot LED, Underseat LED lighting
LED module for Crossing levels

Main Customers & References:

SNCF VOYAGEURS –AGC / ZTER LED lighting (LED tubes, reading lights)
SNCF RESEAU – LED lighting for crossing levels
KFS – Eclairage sous siège **MF19**
KFS – options siège 1^{ère} classe **DUPLEX** (Liseuse, secrétaire, USB, balisage sous siège, touch)

Type:

PME

Nb employees:

Turnover: 4.8M€

SKILLS:

LED, Incandescence lighting
electronical, mechanics skills

Certifications:

- ISO9001 V2015
- ISO14001 V2015

International:

Germany, USA, Italy, Spain, Belgium



PROCONNECT

Railway market

Status: SASU

7-9-11 RUE JEAN ROUXEL, 44700 ORVAULT

Web site : <https://www.proconnect.fr/fr/>

Main Activity:

Manufacturer in the conception of industrial connectors

Contact:

Josselin SAILLARD

Rail Project Manager

Tel: +33 6 31 26 13 85

email address:

j.saillard@proconnect.com

Presentation: French company founded in 1981, Proconnect is specialized in the design and manufacturing of industrial connectors and cabinets, (low and medium voltage, up to 24 kV and 800 A, IK 08 - 10/ IP 66/67) for Railways applications. Certified ISO 9001, Proconnect exports theirs connectors solutions to more than 40 countries		Main products Rail: <ul style="list-style-type: none"> - Connectors for external power supply system, for railways, new, for optimization of train maintenance, all types of trains: (tramway, metro, EMU (FR: self-propelled), high speed, etc.). - The EN 50546 connection allows the train to be powered at the depot (three-phase - 400 V). - 3PX, 3PV, 3PXU sockets and plugs. - Sockets with AC23 breaks. - Conform with railways standards. 		Customers & references: SIEMENS, CAF, SNCF, RATP, ALSTROM, ONCF, ISRAEL RAILWAYS, CRRC, etc.	
Type: SME	Skills: Electrical connectors Plugs & sockets (mal & female) Metal rail connectors	Certification: ISO 9001 certified since 1998	International: 46 Countries		
N° employees: 10					
Turnover: 6,2 M€					





RAILwAI

Railway market

Status: SAS

Cap Omega, Rond-point BENJAMIN FRANKLIN 34000
MONTPELLIER

Main Activity:

Railway maintenance optimization software

Contact:

Bruno Dabilly
CEO
Tel: +33 6 09 48 79 45
email address:
bruno.dabilly@railwai.com

<p>Presentation:</p> <p>RAILwAI, which stands for "Rail with Artificial Intelligence," is a software publisher that specializes in optimizing railway maintenance using data-driven solutions. The RAILwAI solution relies on a global platform, the ability to cross-reference data (advanced analytics), and prediction models (predictive analytics). It provides operators and maintainers with a comprehensive view of the key data related to their infrastructure, enabling them to better understand and make optimal decisions."</p>		<p>Main rail products:</p> <p>DATA STATION: Data Governance and Visualization Center WEATHER: Automated management of interventions based on weather conditions MIDA: Dynamic and adaptive maintenance of infrastructure to optimize interventions (monitoring, maintenance, renewal) GEOMETRY: Management and contextualization of linear defects (Track geometry and Catenary, Ballast profile, Clearance gauge) INSPECTION: Detection and tracking of point defects collected on the field (video recognition, LIDAR...) TRAFFIC: Management of non-compliances of traffic and their impact on infrastructure SIGNALLING: Management and contextualization of defects in the Signaling subsystem SIGNALLING :</p>		<p>Main Customers & References:</p> <p>Oc'Via Maintenance is a French company that offers railway maintenance services.</p>	
<p>Type: PME Nb employees: 15 Turnover: 500 K€</p>	<p>Skills: Railway maintenance, Artificial Intelligence, Data driven, Machine learning, Predictive maintenance</p>	<p>Certifications:</p>	<p>International: Worldwide</p>		

other contacts: Martin MARCILLE - Tel:+33 7 60 68 46 12 martin.marcille@railwai.com / Marta MIRALPEIX +34 613990507 marta.miralpeix@railwai.com





SOPLAMI

Railway market

Status: (Company)

100 Rue Eric Tabarly

Web site: <http://soplami.fr>

Main activity:

Thermoforming expert

Mastery of plastic transformation techniques (thermoforming, machining, assembly, painting)

Contact:

Clément LOUBET

Commercial Sponsor

Tel: +33 7 86 25 83 90

email address:

Clement.loubet@soplami.fr

Presentation:

Founded in **1965**, historically a direct supplier to aeronautics, SOPLAMI has been a **pioneer** for two generations of reliable and economical thermoformed solutions for interior trim.

Today, we bring you innovative solutions and a robust source of supply for your equipped sets. With our 3 sites and our presence in France and Morocco, our priorities are the respect of **Quality, Deadline and Best Cost.**

Main Rail Products:

- Signage on board
- Enclosures/walls and interior cladding elements
- Seat trim (rollover, shelf, armrest ...)

Customers & References:

Although new to the field, SOPLAMI has already collaborated with Alstom Transport Aytre La Rochelle, as well as CAF (formerly Alstom Transport Reichshoffen).

With its historical experience in aeronautics, SOPLAMI is committed to applying the same rigor to the needs of the railway.

Type:

SME

NB of employees:
100

Turnover:
10000K€

Skills:

Qualified in special processes:
Riveting
Collage
Paint

Certifications:

- ISO 9001
- **ISO 14001**
- EN9100

International presence:

- Morocco (Subsidiary in Casablanca)

Other contact: Inès Yassimides : Ines.yassimides@soplami.fr - Tel:+33 7 86 25 95 19





SPHEREA TEST & SERVICES

Market: Rail

Type: Intermediate sized enterprise

ADRESSE HQ: 109 av. du Général Eisenhower - CS 42326 –
31023 Toulouse Cedex 1 - France.

Web site: <http://www.spherea.com>

Main activity:

Design & manufacturing of testing solutions
MRO, Obsolescence management of electronic systems

Contact:

Romain BARRAS
Global Railway Market Leader
Tel: +33 6 66 32 65 82
email address: romain.barras@spherea.com

<p>Presentation:</p> <p>As a designer of testing solutions and associated maintenance service throughout the system life-cycle, SPHEREA contributes to:</p> <ul style="list-style-type: none"> - Improve the equipment reliability - Lower the Non-Recurring-Costs - Maximize your industrial performance - Ensure availability of mobility systems - Extend the lifetime of critical systems 		<p>Railway portfolio:</p> <ul style="list-style-type: none"> - IV&V: real time integrated test Systems & Software for Electronic, Signalling and Power equipment - Certification test platform for ETCS/ERTMS equipment - Embedded test/prototyping and safety equipment - Maintenance tools and GO TO SERVICE modular test bench - Dynamic Test Bench for metro train maintenance - Connected shopfloor (test program and monitoring) - Modular testing equipment for serial production - Life extension and obsolescence management of complete critical systems - Maintenance, Repair, Overhaul of electronic and wired equipment 		<p>Main Customers & References:</p> <ul style="list-style-type: none"> - U-TEST® software: SNCF, ALSTOM, KEOLIS - Certification test bench of EVC & ATESS 3G/4G : SNCF, LEF - KARM-NG (embedded safety module): SNCF - ESVE (overspeed control and emergency breaking actuator): SNCF - inspection/diagnosis module for EP break control during maintenance operations: DB - Connected tools and test monitoring. Maintenance center of Lille VAL: KEOLIS/MEL - Dynamic test infrastructure VAL206/208: KEOLIS/MEL - Diagnosis and GO TO SERVICE test benches for metro/RER board controllers: RATP - Test benches of power converters and Powerpack: SNCF, Alstom - MRO, obsolescence management :RATP, KEOLIS, EUROTUNNEL, DB CARGO, MTAG,... 	
<p>Type: ISE</p> <p>Headcount: 550</p> <p>Turnover: 110 000k€</p>	<p>Technology: Electronic software Electropneumatic Electromécanic Optronie HF/RF</p>	<p>Certifications: ISO9001/14001</p>	<p>Footprint: Subsidiaries in Germany, UK, US, China and India Local partners and representative in Middle East area and Africa</p>		

Other contacts: Clément Delbouys, Key Account Manager Railway, clement.delbouys@spherea.com





Vector France

Railway market

SAS, Société par Actions Simplifiée
106 av Marx Dormoy – 92120 MONTROUGE

Web site:

<https://www.vector.com/fr/fr/produits/industries/railway/>

Main Activity:

Editeur de logiciel

Contact:

Frederic VIDY
Responsible for the railway sector

Tel: +33 1 73 28 42 28

email address:

Frederic.Vidy@vector.com

Presentation: For 35 years, Vector has been an expert partner in the development of on-board electronics. We develop solutions to facilitate the complex work of engineers. Spread over 29 sites around the world and more than 3,500 Vectorians, we provide the various players in the railway industry with a professional and open development platform, as well as solutions and services for the design, testing and validation of embedded systems.		Main rail products: We provide a professional and open development platform, as well as solutions and services for creating embedded systems. Vector's embedded system test tools help you set up simulation and test environments efficiently and meet regulatory requirements like EN50128 / CENELEC Whatever the task in the development process, Vector test tools provide a scalable and reusable solution from pure SIL simulations to HIL testing with functional acceptance testing.		Main Customers & References: Akiem, Alstom, Bombardier, Colas Rail, DB Systemtechnik GmbH, EGIS RAIL, Europorte, Faiveley Transport, FIF, Hitachi, Keolis, Lohr Industrie, MC2I, Omnifer, Portalp, Railcoop, RATP, Régionrail CFR, Siemens Mobility, SNCF, Société du Grand Paris, Soletanche Bachy, Stationone, Systra, Televic, Thales, Transalp, Transamo, Transdev, Wabtec	
Type: Groupe	Skills: Solutions and services for the creation of embedded systems. Embedded systems test tools	Certifications: EN50128 / CENELEC	International: Vector is headquartered in Germany (Stuttgart) and has subsidiaries in Brazil, China, France, Great Britain, India, Italy, Japan, Austria, Romania, Sweden, South Korea, Spain and the United States. Vector France supports companies based in France, Belgium and Luxembourg		
Nb employees: 3500					
Turnover: 1,06 milliard d'euros					

Other contact: Agnès Coryn - Tel: +33 1 73 28 42 17 Agnes.coryn@vector.com





TOTEM : A global approach and references

They do trust us...



SIEMENS

SIANA
Société Marocaine de Maintenance des Railways & Trains à Grande Vitesse

BOMBARDIER
TRANSPORTATION

ALSTOM
• mobility by nature •

RATP DEV

RATP

SNCF

ONCF

KEOLIS

EURO
TUNNEL

transdev
the mobility company

HITACHI
Inspire the Next

Al boraq البراق

CAF



OCCITANIE REGION / FRANCE

A strategic position at the heart of Southern Europe

- Larger than Ireland (70 237 km²)
- 6 million inhabitants
- €173 billion GDP
- +40 000 inhabitants each year
- 1st french region for R&D expenses
- 230,000 students
- World leader in civil aeronautics
- European leader for space
- Market place for embedded systems and power electronics



Our partners



Contacts



Franck EDELAAR
Managing Director
Tel: +33 (0)7 82 88 31 17
eMail: franck.edelaar@clustertotem.fr
Web: www.clustertotem.fr / [LinkedIn](#)



Bruno GUILLET
Project Manager
Tel: +33 (0)5 61 12 57 02
eMail: bruno.guillet@agence-adocc.com
Web: www.agence-adocc.com

