



# A bridge from aerospace to offshore wind

# MCE History

1989

voestalpine  
**MCE**  
VOEST

2016

**MCE**  
part of the family  
HABAU GROUP



© MCE GmbH



© MCE GmbH



© MCE GmbH

**MCE**  
part of the family  
HABAU GROUP



# MCE at a Glance

## 2 Business Units



© MCE GmbH



© Lizenzfrei

## 2 Plants



© MCE Slany s.r.o.

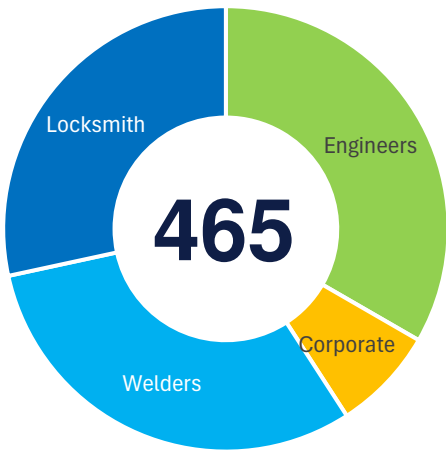


© MCE Nyíregyháza Kft



€

150M



# Industrialized Floaters Assembly

## Bridges

- Big structures
- Heavy parts
- Best fitting



© MCE GmbH

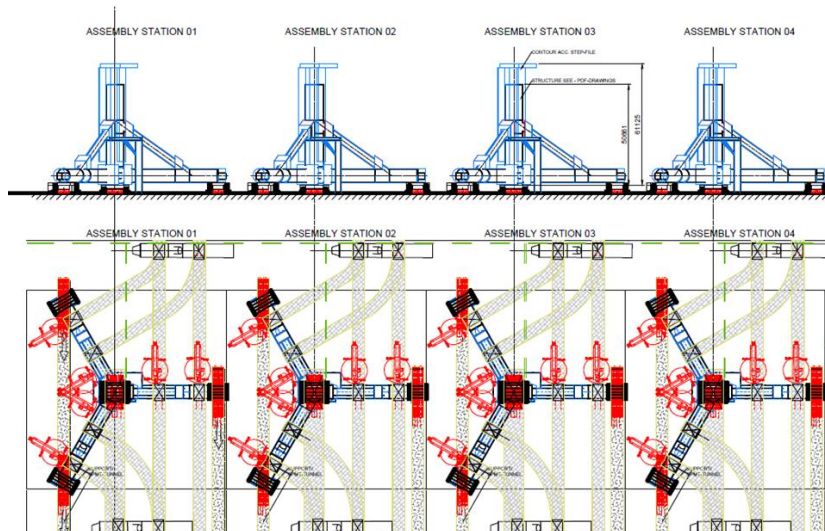


## Assembly Lines

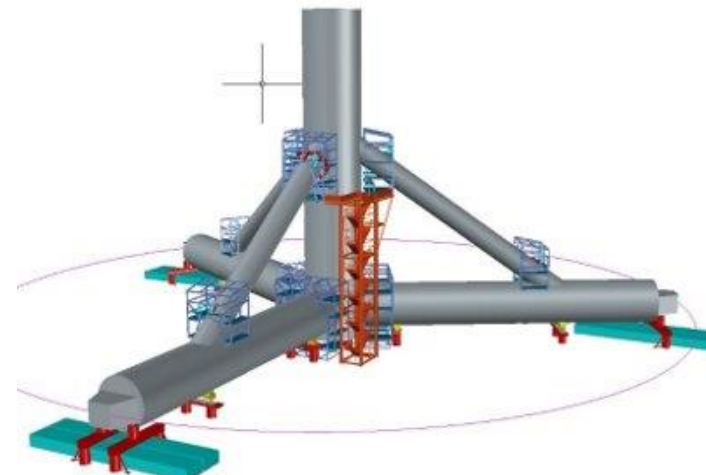
- Repetitiveness
- Reliability
- Takt times



© MCE GmbH



© SBM Offshore / MCE GmbH



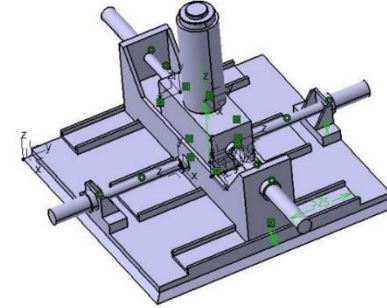
© SBM Offshore / MCE GmbH

# Key Success Factors

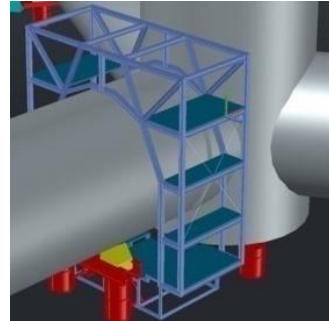
- Manipulation
- Jigs
- Measurements / Best Fit Method
- Housing
- Temporary Connections
- Alignment of Welding Edges
- Welding
- Automatization
- Corrosion Protection



© MCE GmbH



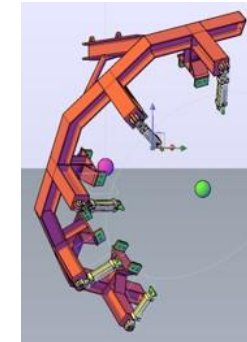
© MCE GmbH



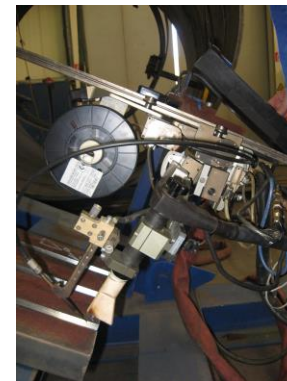
© MCE GmbH



© MCE GmbH



© MCE GmbH



© MCE GmbH



# Key Success Factors: a last Bridge



© Port-La-Nouvelle

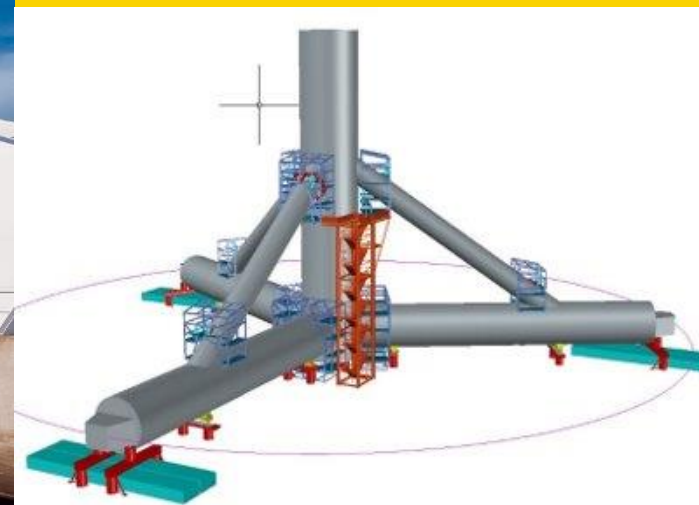


© MCE GmbH



© MCE GmbH

**THANK YOU!**



©SBM Offshore / MCE GmbH

# A bridge from aerospace to offshore wind

**Bruno VIDAL**  
Head of French Branch

T +33 6 08 85 57 43  
E [bruno.vidal@mce-hg.com](mailto:bruno.vidal@mce-hg.com)  
W [www.mce-hg.com](http://www.mce-hg.com)

All rights reserved. Confidential and proprietary document. This document and all information contained herein is the sole property of MCE GmbH (MCE-A). No intellectual property rights are granted by the delivery of this document or the disclosure of its content. This document shall not be reproduced or disclosed to a third party without the express written consent of MCE-A. This document and its content shall not be used for any purpose other than that for which it is supplied.

The statements made herein do not constitute an offer. They are based on the mentioned assumptions and are expressed in good faith. Where the supporting grounds for these statements are not shown, MCE-A will be pleased to explain the basis thereof.

# performance in construction and plant engineering